

Free Project  
NOT FOR RESALE

# Flamingo Beach

QUILT 2



Featuring fabrics from the **Flamingo Beach** collection from **STUDIO C fabrics**

## Fabric Requirements

- |                                     |                                     |
|-------------------------------------|-------------------------------------|
| (A) 5039-22.....1/4 yard            | (I) 5037-44.....3/4 yard            |
| (B) 1351- Lipstick.....1/3 yard     | (J) 5040-61.....7/8 yard            |
| (C) 5035-62.....1/3 yard            | (K) Peppered Cottons-9..1-1/8 yards |
| (D) 5038-28.....1/3 yard            | Backing 5031-66.....3-1/2 yards     |
| (E) 5036-12.....5/8 yard            |                                     |
| (F) 5030-26.....5/8 yard            | *Includes Binding                   |
| (G) 5029-22.....5/8 yard            |                                     |
| (H) Peppered Cottons-11*...5/8 yard |                                     |

## Additional Supplies Needed

- Batting: 60" x 80"
- Sewing and Quilting thread
- Sewing and Quilting supplies
- Quilt size: 52" x 72"
- Skill Level: Beginner
- Quilt designed by Denise Russel



## Fabrics in the Collection



Panel - Pink  
5028P-22



Flamingoes - Pink  
5029-22



Tropical Floral - Pink/Green  
5030-26



Tropical Leaves - Green  
5031-66



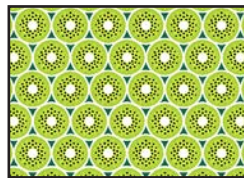
Pineapples - Lime  
5032-64



Bananas - Pink/Yellow  
5033-24



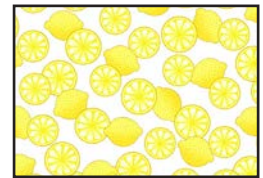
Strawberries - Pink  
5034-22



Kiwis - Lime  
5035-62



Watermelon - Sky Blue/Pink  
5036-12



Lemons  
Citrus Yellow- 5037-44



Mini Tropical Floral  
Dark Pink- 5038-28



Cocktails - Multi  
5039-22



Surf Boards - Teal Multi  
5040-61

Selected fabrics from the Just Color!  
Collection



Pigment White



Lipstick

Selected fabric from the Peppered  
Cottons Collection



11 - Marine Blue

# Cutting

## Cutting Instructions

*Please note: All strips are cut across the width of the fabric (WOF) from selvage to selvage unless otherwise noted.  
(WOF = Width of Fabric, LOF = Length of Fabric)*

### **Fabric A (5039-22 Cocktails-Multi), cut:**

\*(1) 4-1/2" x WOF strip. Sub-cut six 4-1/2" squares.

### **Fabric B (JustColor! 1351-Lipstick), cut:**

\*(2) 2-1/2" x WOF strips. Sub-cut eighteen 2-1/2" squares.

### **Fabric C (5035-62 Kiwis-Lime), cut:**

\*(3) 2-1/2" x WOF strips. Sub-cut forty-eight 2-1/2" squares.

### **Fabric D (5038-28 Mini Tropical Floral-Dark Pink), cut:**

\*(3) 2-1/2" x WOF strips. Sub-cut forty-eight 2-1/2" squares.

### **Fabric E (5036-12 Watermelon-Sky Blue/Pink), cut:**

\*(2) 8-1/2" x WOF strips. Sub-cut twenty-four 2-1/2" x 8-1/2" rectangles.

### **Fabric F (5030-26 Tropical Floral-Pink/Green), cut:**

\*(2) 8-1/2" x WOF strips. Sub-cut six 8-1/2" squares.

### **Fabric G (5029-22 Flamingoes-Pink), cut:**

\*(2) 8-1/2" x WOF strips. Sub-cut six 8-1/2" squares.

### **Fabric H (Peppered Cottons-11 Marine Blue), cut:**

\*(7) 2-1/2" x WOF strips for binding.

### **Fabric I (5037-44 Lemons-Citrus Yellow), cut:**

\*(3) 2-1/2" x WOF strips. Sub-cut forty-eight 2-1/2" squares.

\*(3) 4-1/2" x WOF strips. Sub-cut forty-eight 2-1/2" x 4-1/2" rectangles.

### **Fabric J (5040-61 Surf Boards-Teal Multi), cut:**

\*(1) 4-1/2" x WOF strip. Sub-cut six 4-1/2" squares.

\*(6) 3-1/2" x WOF strips for border 2.

### **Fabric K (Peppered Cottons-9 White Sugar), cut:**

\*(1) 2-1/2" x WOF strip. Sub-cut two 2-1/2" x 18-1/2" rectangles.

\*(1) 18-1/2" x WOF strip. Sub-cut sixteen 2-1/2" x 18-1/2" rectangles (for a total of eighteen).

\*(6) 2-1/2" x WOF strips for border 1.

## Sewing

*Measurements include 1/4" seam allowances. Sew with right sides together unless otherwise stated. If no direction is specified, press seam toward darker fabric.*

### Block Assembly

1. Noting fabric orientation, sew one 2-1/2" x 8-1/2" Fabric E rectangle to one 8-1/2" Fabric G square (*figure 1*). Press the seam toward rectangle. Repeat to make six 8-1/2" x 10-1/2" units.

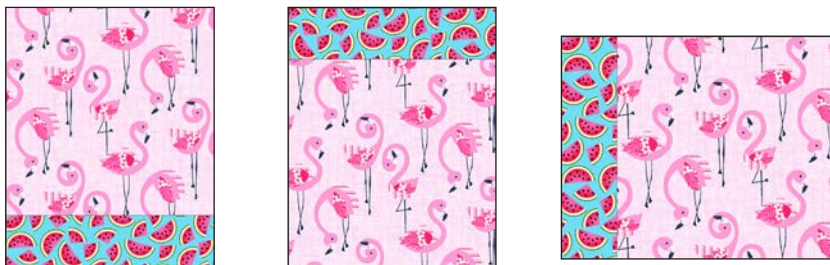


Figure 1 – Make 2 of each.

2. Repeat step 1 with six 2-1/2" x 8-1/2" Fabric E rectangles and the 8-1/2" Fabric F squares (*figure 2*).



Figure 2 – Make 6.

3. Draw a diagonal line on the wrong side of the 2-1/2" Fabric C squares. With right sides together, layer a marked square on the left short end of a 2-1/2" x 4-1/2" Fabric I rectangle and stitch on the drawn line. Trim 1/4" away from the seam line and press open. In the same manner, stitch another Fabric C square to the opposite end of the same rectangle. Repeat to make a total of twenty-four flying-geese units. Proceed in the same manner with the 2-1/2" Fabric D squares and the remaining 2-1/2" x 4-1/2" Fabric I rectangles (*figure 3*).



Unit-X

Unit-Y

Figure 3 – Make 24 of each.

4. Sew two 2-1/2" Fabric I squares to opposite ends of ~~six~~ step 3 Units X and Y (*figure 4*). Press the seams away from center.



Figure 4



## Sewing Cont.

5. Noting fabric orientation, sew a 2-1/2" Fabric B square in between a step 4 Unit-X1 and a Unit-Y1 (*figure 5*). Press the seams toward the square. Repeat to make six strips.



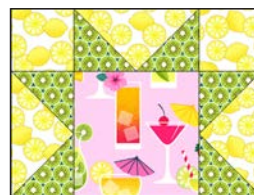
Figure 5 – Make 6.

6. Noting fabric orientation, sew the remaining 2-1/2" Fabric I squares to **twelve** of the step 3 Units X and Y (*figure 6*). Press the seams toward the squares. Make six strips of each type.



Figure 6 – Make 6 of each.

7. Using the last step 3 flying geese and the step 6 strips, assemble the partial star blocks as shown below (*figure 7*). Make two of each.



A/C stars



D/J stars

Figure 7 – Make 2 of each.

8. Sew one 2-1/2" x 8-1/2" Fabric E rectangle to the completed sides of each step 7 block (*figure 8*). Press the seams toward rectangle.



Figure 8 - Make two of each.

## Sewing Cont.

9. Sew together the A/C stars and the step 1 units, and the D/J stars with the step 2 units (*figure 9*). Press the seams away from stars. Make two of each.



Figure 9 – Make 2 of each.

10. Using the step 5 strips and the step 9 units, sew two blocks of each type as shown below (*figure 10, continued next page*). Press the seams open. Make six 18-1/2" blocks.





## Sewing Cont.

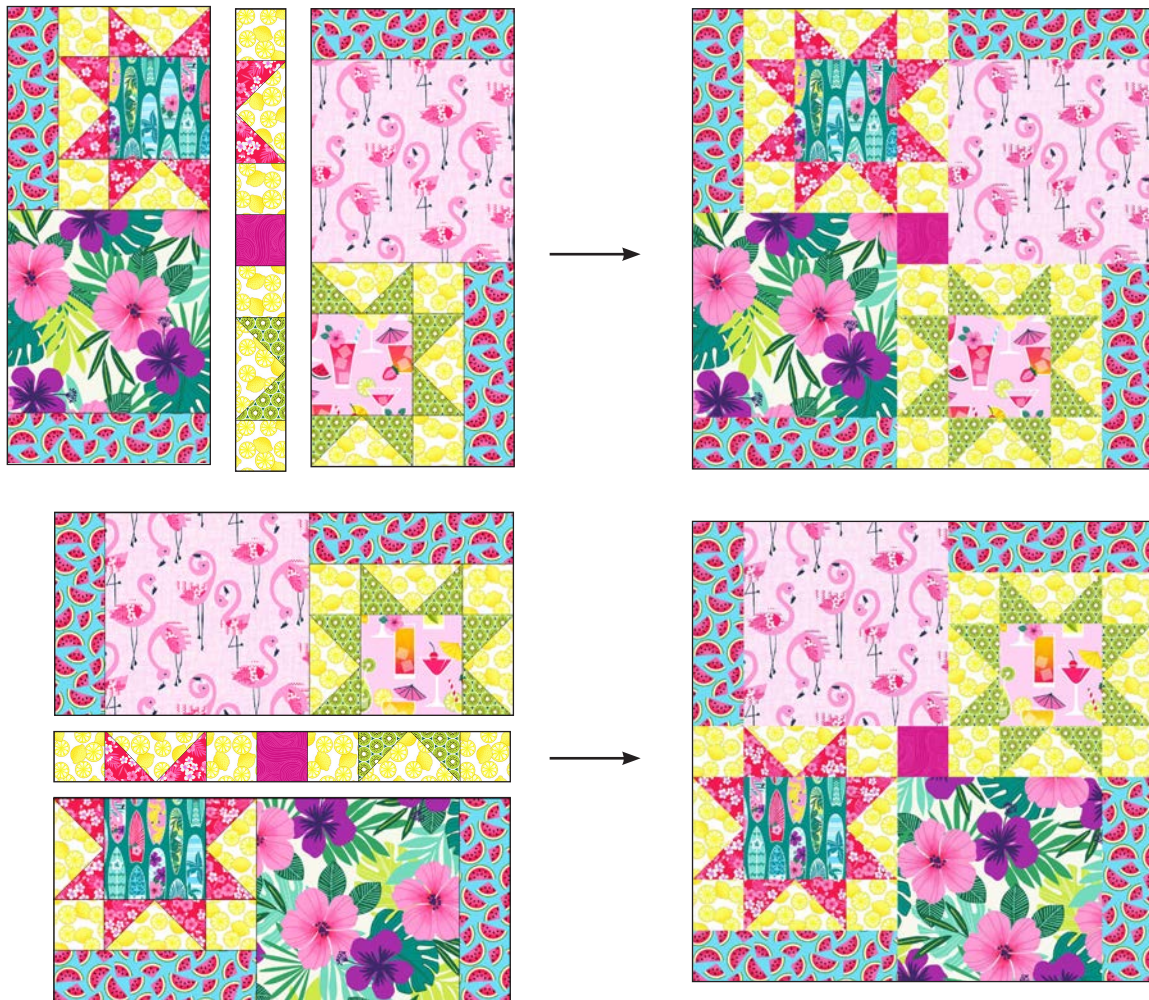


Figure 10 – Make 2 blocks of each.

### Quilt Top Assembly

*(Follow the quilt diagram and photograph while assembling the quilt top.)*

11. Referring to the quilt photo for block placement, lay out the 2-1/2" x 18-1/2" Fabric K sashing strips and the blocks in three rows, and join them together in each row. Press the seams toward the blocks.
12. To make the horizontal sashing rows, alternatively sew together three 2-1/2" Fabric B squares and two 2-1/2" x 18-1/2" Fabric K sashing strips. Repeat to make a total of four sashing strips. Press the seams toward the cornerstones.
13. Matching adjacent seams, sew the block rows and horizontal sashing strips together. Press the seams in one direction.
14. For border 1, sew the six 2-1/2" Fabric K strips together end to end using diagonal seams. Measure the vertical length of the quilt top through the center and cut two border strips that length. Sew one strip to each side of

## Sewing Cont.

the quilt top. Measure the width of the quilt top through the center. Cut two border strips that length and sew one to the top and one to the bottom. Press the seams toward the borders.

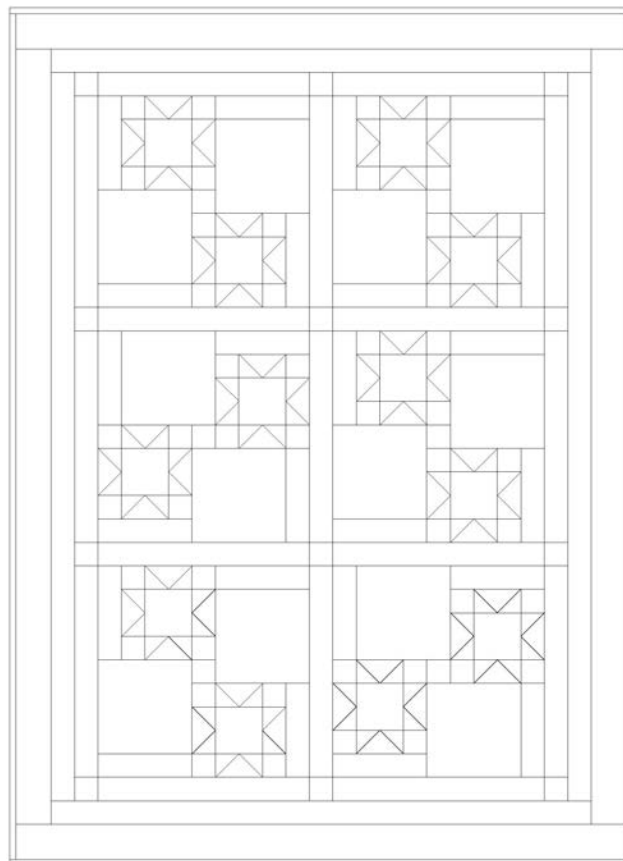
15. Repeat step 14 with the six 3-1/2" Fabric J strips to make and add border 2.

### Layering, Quilting, and Finishing

16. Create a quilt sandwich with the batting between the quilt top and the backing. Pin or baste layers together, mark quilting design, and quilt by hand or machine. When quilting is complete, remove pins or basting, and trim batting and backing even with raw edges of the quilt top.

### Binding

17. Join the nine 2-1/2" Fabric H binding strips together end to end using a diagonal seam to make one long strip. Press in half lengthwise. Sew binding to the edges of the quilt top, mitering corners, and overlapping ends. Fold binding to the back of the quilt and stitch it in place by hand to finish.



Quilt Diagram

©2019 Studio e Fabrics®

*Every effort has been made to ensure that all projects are error free. All the information is presented in good faith; however, no warranty can be given nor results guaranteed as we have no control over the execution of instructions. Therefore, we assume no responsibility for the use of this information or damages that may occur as a result. When errors are brought to our attention, we make every effort to correct and post a revision as soon as possible. Please make sure to check [www.studioefabrics.com](http://www.studioefabrics.com) for pattern updates prior to starting the project. We also recommend that you test the project prior to cutting for kits. Finally, all free projects are intended to remain free to you and are not for resale.*